

3-Carboxymethyl-1*H*-indole-4-carboxylic acid

Shulin Mao

Ordered Matter Science Research Center, College of Chemistry and Chemical Engineering, Southeast University, Nanjing 211189, People's Republic of China
Correspondence e-mail: chmsunbw@seu.edu.cn

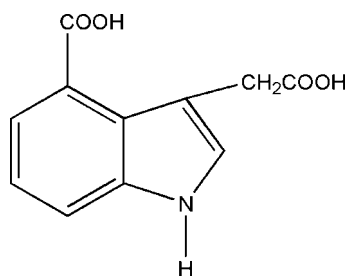
Received 29 November 2011; accepted 1 December 2011

Key indicators: single-crystal X-ray study; $T = 293$ K; mean $\sigma(\text{C}-\text{C}) = 0.002$ Å; R factor = 0.046; wR factor = 0.132; data-to-parameter ratio = 15.2.

In the title compound, $\text{C}_{11}\text{H}_9\text{NO}_4$, the carboxyl group bonded to the six-membered ring lies close to the plane of the 1*H*-indole ring system [dihedral angle = $13.13(9)^\circ$], whereas the carboxylic acid group linked to the five-membered ring by a methylene bridge is close to perpendicular [$78.85(9)^\circ$]. In the crystal, $\text{O}-\text{H}\cdots\text{O}$ and $\text{N}-\text{H}\cdots\text{O}$ hydrogen bonds link the molecules, generating (110) sheets.

Related literature

For background to indoles as pharmaceuticals, see: Lang *et al.* (2011).



Experimental

Crystal data

 $\text{C}_{11}\text{H}_9\text{NO}_4$
 $M_r = 219.19$

Triclinic, $P\bar{1}$
 $a = 5.4573(11)$ Å
 $b = 9.823(2)$ Å
 $c = 9.940(2)$ Å
 $\alpha = 73.90(3)^\circ$
 $\beta = 78.57(3)^\circ$
 $\gamma = 80.40(3)^\circ$

$V = 498.3(2)$ Å³
 $Z = 2$
 Mo $K\alpha$ radiation
 $\mu = 0.11$ mm⁻¹
 $T = 293$ K
 $0.30 \times 0.23 \times 0.20$ mm

Data collection

Rigaku SCXmini CCD diffractometer
 Absorption correction: multi-scan (*CrystalClear*; Rigaku, 2005)
 $T_{\min} = 0.977$, $T_{\max} = 0.984$

5115 measured reflections
 2263 independent reflections
 1786 reflections with $I > 2\sigma(I)$
 $R_{\text{int}} = 0.028$

Refinement

$R[F^2 > 2\sigma(F^2)] = 0.046$
 $wR(F^2) = 0.132$
 $S = 0.95$
 2239 reflections

147 parameters
 H-atom parameters constrained
 $\Delta\rho_{\max} = 0.30$ e Å⁻³
 $\Delta\rho_{\min} = -0.21$ e Å⁻³

Table 1

Hydrogen-bond geometry (Å, °).

$D-\text{H}\cdots A$	$D-\text{H}$	$\text{H}\cdots A$	$D\cdots A$	$D-\text{H}\cdots A$
$\text{O1}-\text{H1}\cdots\text{O2}^i$	0.82	1.83	2.6504 (19)	174
$\text{O4}-\text{H4}\cdots\text{O3}^{ii}$	0.82	1.91	2.719 (2)	171
$\text{N1}-\text{H1B}\cdots\text{O3}^{iii}$	0.86	2.38	3.152 (2)	150

Symmetry codes: (i) $-x, -y + 2, -z + 1$; (ii) $-x, -y + 2, -z + 2$; (iii) $-x + 1, -y + 1, -z + 2$.

Data collection: *CrystalClear* (Rigaku, 2005); cell refinement: *CrystalClear*; data reduction: *CrystalClear*; program(s) used to solve structure: *SHELXS97* (Sheldrick, 2008); program(s) used to refine structure: *SHELXL97* (Sheldrick, 2008); molecular graphics: *DIAMOND* (Brandenburg & Putz, 2005); software used to prepare material for publication: *SHELXL97*.

Supplementary data and figures for this paper are available from the IUCr electronic archives (Reference: HB6541).

References

- Brandenburg, K. & Putz, H. (2005). *DIAMOND*. Crystal Impact GbR, Bonn, Germany.
 Lang, L., Wu, J.-L., Shi, L.-J., Xia, C.-G. & Li, F.-W. (2011). *Chem. Commun.* **47**, 12553–12555.
 Rigaku (2005). *CrystalClear*. Rigaku Corporation, Tokyo, Japan.
 Sheldrick, G. M. (2008). *Acta Cryst.* **A64**, 112–122.

supplementary materials

Acta Cryst. (2012). E68, o146 [doi:10.1107/S1600536811051865]

3-Carboxymethyl-1*H*-indole-4-carboxylic acid

S. Mao

Experimental

To a solution of the title compound (0.2 g) in methanol (20 ml) by stirred at room temperature and then placed in a dark place. Yellow single crystals were obtained by slow evaporation of the solution over a period of 5 days.

Refinement

Positional parameters of all the H atoms were calculated geometrically and refined using a riding model, with C—H = 0.94 Å and $U_{\text{iso}}(\text{H}) = 1.2U_{\text{eq}}(\text{C})$ respectively.

Figures

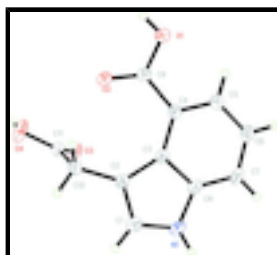


Fig. 1. The asymmetric unit of (I) with displacement ellipsoids drawn at the 30% probability level.

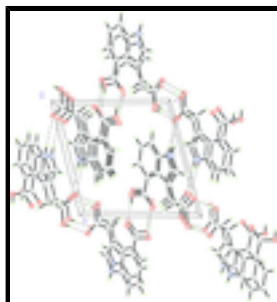


Fig. 2. Packing diagram.

3-Carboxymethyl-1*H*-indole-4-carboxylic acid

Crystal data

$\text{C}_{11}\text{H}_9\text{NO}_4$	$V = 498.3 (2) \text{ \AA}^3$
$M_r = 219.19$	$Z = 2$
Triclinic, $P\bar{1}$	$F(000) = 228$
Hall symbol: $-P 1$	$D_x = 1.461 \text{ Mg m}^{-3}$
$a = 5.4573 (11) \text{ \AA}$	Mo $K\alpha$ radiation, $\lambda = 0.71073 \text{ \AA}$
$b = 9.823 (2) \text{ \AA}$	$\theta = 3.4\text{--}27.4^\circ$

supplementary materials

$c = 9.940 (2) \text{ \AA}$	$\mu = 0.11 \text{ mm}^{-1}$
$\alpha = 73.90 (3)^\circ$	$T = 293 \text{ K}$
$\beta = 78.57 (3)^\circ$	Prism, yellow
$\gamma = 80.40 (3)^\circ$	$0.30 \times 0.23 \times 0.20 \text{ mm}$

Data collection

Rigaku SCXmini CCD diffractometer	2263 independent reflections
Radiation source: fine-focus sealed tube graphite	1786 reflections with $I > 2\sigma(I)$
Detector resolution: $13.6612 \text{ pixels mm}^{-1}$	$R_{\text{int}} = 0.028$
CCD_Profile_fitting scans	$\theta_{\text{max}} = 27.4^\circ, \theta_{\text{min}} = 3.4^\circ$
Absorption correction: multi-scan (<i>CrystalClear</i> ; Rigaku, 2005)	$h = -6 \rightarrow 7$
$T_{\text{min}} = 0.977, T_{\text{max}} = 0.984$	$k = -12 \rightarrow 12$
5115 measured reflections	$l = -12 \rightarrow 12$

Refinement

Refinement on F^2	Primary atom site location: structure-invariant direct methods
Least-squares matrix: full	Secondary atom site location: difference Fourier map
$R[F^2 > 2\sigma(F^2)] = 0.046$	Hydrogen site location: inferred from neighbouring sites
$wR(F^2) = 0.132$	H-atom parameters constrained
$S = 0.95$	$w = 1/[\sigma^2(F_o^2) + (0.0712P)^2 + 0.1712P]$
2239 reflections	where $P = (F_o^2 + 2F_c^2)/3$
147 parameters	$(\Delta/\sigma)_{\text{max}} = 0.015$
0 restraints	$\Delta\rho_{\text{max}} = 0.30 \text{ e \AA}^{-3}$
	$\Delta\rho_{\text{min}} = -0.21 \text{ e \AA}^{-3}$

Special details

Geometry. All e.s.d.'s (except the e.s.d. in the dihedral angle between two l.s. planes) are estimated using the full covariance matrix. The cell e.s.d.'s are taken into account individually in the estimation of e.s.d.'s in distances, angles and torsion angles; correlations between e.s.d.'s in cell parameters are only used when they are defined by crystal symmetry. An approximate (isotropic) treatment of cell e.s.d.'s is used for estimating e.s.d.'s involving l.s. planes.

Refinement. Refinement of F^2 against ALL reflections. The weighted R -factor wR and goodness of fit S are based on F^2 , conventional R -factors R are based on F , with F set to zero for negative F^2 . The threshold expression of $F^2 > \sigma(F^2)$ is used only for calculating R -factors(gt) *etc.* and is not relevant to the choice of reflections for refinement. R -factors based on F^2 are statistically about twice as large as those based on F , and R -factors based on ALL data will be even larger.

Fractional atomic coordinates and isotropic or equivalent isotropic displacement parameters (\AA^2)

	x	y	z	$U_{\text{iso}}^*/U_{\text{eq}}$
O3	0.1544 (2)	0.84288 (12)	0.97213 (13)	0.0443 (3)

O2	0.1686 (3)	0.91438 (13)	0.62549 (15)	0.0579 (4)
O1	0.0340 (3)	0.82135 (14)	0.47736 (16)	0.0648 (5)
H1	-0.0320	0.9036	0.4520	0.097*
O4	0.2593 (3)	1.06204 (12)	0.86103 (17)	0.0588 (4)
H4	0.1255	1.0856	0.9079	0.088*
N1	0.7240 (3)	0.48127 (14)	0.87277 (16)	0.0423 (4)
H1B	0.8103	0.4047	0.9134	0.051*
C3	0.4527 (3)	0.63513 (15)	0.73814 (15)	0.0300 (3)
C11	0.2985 (3)	0.92105 (16)	0.88625 (17)	0.0357 (4)
C9	0.1571 (3)	0.81052 (17)	0.58232 (17)	0.0375 (4)
C4	0.2738 (3)	0.66441 (16)	0.64359 (16)	0.0337 (4)
C2	0.5741 (3)	0.71447 (16)	0.80476 (17)	0.0330 (3)
C8	0.5522 (3)	0.48888 (16)	0.78546 (17)	0.0347 (4)
C7	0.4775 (3)	0.37626 (17)	0.74825 (19)	0.0416 (4)
H7	0.5467	0.2826	0.7820	0.050*
C5	0.2020 (4)	0.55078 (18)	0.60716 (19)	0.0440 (4)
H5	0.0857	0.5703	0.5454	0.053*
C1	0.7343 (3)	0.61564 (19)	0.8840 (2)	0.0423 (4)
H1A	0.8362	0.6374	0.9380	0.051*
C10	0.5422 (3)	0.87055 (16)	0.80186 (19)	0.0375 (4)
H10A	0.5509	0.9260	0.7040	0.045*
H10B	0.6816	0.8894	0.8385	0.045*
C6	0.2990 (4)	0.40813 (18)	0.6605 (2)	0.0463 (4)
H6	0.2424	0.3352	0.6363	0.056*

Atomic displacement parameters (\AA^2)

	U^{11}	U^{22}	U^{33}	U^{12}	U^{13}	U^{23}
O3	0.0485 (7)	0.0270 (6)	0.0508 (7)	0.0021 (5)	-0.0007 (6)	-0.0082 (5)
O2	0.0848 (10)	0.0310 (6)	0.0679 (9)	0.0111 (6)	-0.0480 (8)	-0.0141 (6)
O1	0.1008 (12)	0.0354 (7)	0.0696 (9)	0.0118 (7)	-0.0576 (9)	-0.0129 (6)
O4	0.0616 (9)	0.0258 (6)	0.0804 (10)	-0.0021 (6)	0.0096 (7)	-0.0159 (6)
N1	0.0411 (8)	0.0319 (7)	0.0511 (8)	0.0107 (6)	-0.0162 (7)	-0.0083 (6)
C3	0.0320 (7)	0.0255 (7)	0.0294 (7)	0.0008 (6)	-0.0016 (6)	-0.0068 (5)
C11	0.0407 (9)	0.0251 (7)	0.0438 (9)	0.0001 (6)	-0.0134 (7)	-0.0106 (6)
C9	0.0443 (9)	0.0319 (8)	0.0362 (8)	0.0010 (7)	-0.0138 (7)	-0.0064 (6)
C4	0.0388 (8)	0.0274 (7)	0.0333 (8)	-0.0005 (6)	-0.0069 (6)	-0.0061 (6)
C2	0.0302 (7)	0.0313 (8)	0.0372 (8)	0.0007 (6)	-0.0056 (6)	-0.0105 (6)
C8	0.0355 (8)	0.0286 (8)	0.0354 (8)	0.0043 (6)	-0.0041 (6)	-0.0063 (6)
C7	0.0517 (10)	0.0234 (7)	0.0452 (9)	0.0025 (7)	-0.0043 (8)	-0.0076 (6)
C5	0.0546 (10)	0.0338 (8)	0.0481 (10)	-0.0030 (7)	-0.0194 (8)	-0.0112 (7)
C1	0.0378 (9)	0.0411 (9)	0.0494 (10)	0.0038 (7)	-0.0144 (7)	-0.0138 (7)
C10	0.0366 (8)	0.0313 (8)	0.0470 (9)	-0.0034 (6)	-0.0101 (7)	-0.0122 (7)
C6	0.0628 (12)	0.0300 (8)	0.0498 (10)	-0.0063 (8)	-0.0128 (9)	-0.0128 (7)

Geometric parameters (\AA , $^\circ$)

O3—C11	1.228 (2)	C9—C4	1.483 (2)
O2—C9	1.226 (2)	C4—C5	1.399 (2)

supplementary materials

O1—C9	1.321 (2)	C2—C1	1.376 (2)
O1—H1	0.8200	C2—C10	1.507 (2)
O4—C11	1.3255 (19)	C8—C7	1.401 (2)
O4—H4	0.8200	C7—C6	1.375 (3)
N1—C1	1.366 (2)	C7—H7	0.9300
N1—C8	1.379 (2)	C5—C6	1.406 (2)
N1—H1B	0.8600	C5—H5	0.9300
C3—C4	1.428 (2)	C1—H1A	0.9300
C3—C8	1.430 (2)	C10—H10A	0.9700
C3—C2	1.455 (2)	C10—H10B	0.9700
C11—C10	1.512 (2)	C6—H6	0.9300
C9—O1—H1	109.5	N1—C8—C3	108.27 (14)
C11—O4—H4	109.5	C7—C8—C3	123.86 (15)
C1—N1—C8	108.65 (13)	C6—C7—C8	118.15 (15)
C1—N1—H1B	125.7	C6—C7—H7	120.9
C8—N1—H1B	125.7	C8—C7—H7	120.9
C4—C3—C8	116.31 (14)	C4—C5—C6	122.44 (16)
C4—C3—C2	137.91 (14)	C4—C5—H5	118.8
C8—C3—C2	105.78 (13)	C6—C5—H5	118.8
O3—C11—O4	122.70 (15)	N1—C1—C2	111.03 (15)
O3—C11—C10	125.15 (14)	N1—C1—H1A	124.5
O4—C11—C10	112.12 (14)	C2—C1—H1A	124.5
O2—C9—O1	121.54 (15)	C2—C10—C11	114.51 (14)
O2—C9—C4	123.59 (15)	C2—C10—H10A	108.6
O1—C9—C4	114.86 (14)	C11—C10—H10A	108.6
C5—C4—C3	119.06 (14)	C2—C10—H10B	108.6
C5—C4—C9	117.85 (15)	C11—C10—H10B	108.6
C3—C4—C9	123.09 (14)	H10A—C10—H10B	107.6
C1—C2—C3	106.26 (14)	C7—C6—C5	120.11 (16)
C1—C2—C10	122.09 (15)	C7—C6—H6	119.9
C3—C2—C10	131.61 (14)	C5—C6—H6	119.9
N1—C8—C7	127.86 (15)		

Hydrogen-bond geometry (\AA , $^\circ$)

$D-H\cdots A$	$D-H$	$H\cdots A$	$D\cdots A$	$D-H\cdots A$
O1—H1 \cdots O2 ⁱ	0.82	1.83	2.6504 (19)	174
O4—H4 \cdots O3 ⁱⁱ	0.82	1.91	2.719 (2)	171
N1—H1B \cdots O3 ⁱⁱⁱ	0.86	2.38	3.152 (2)	150

Symmetry codes: (i) $-x, -y+2, -z+1$; (ii) $-x, -y+2, -z+2$; (iii) $-x+1, -y+1, -z+2$.

Fig. 1

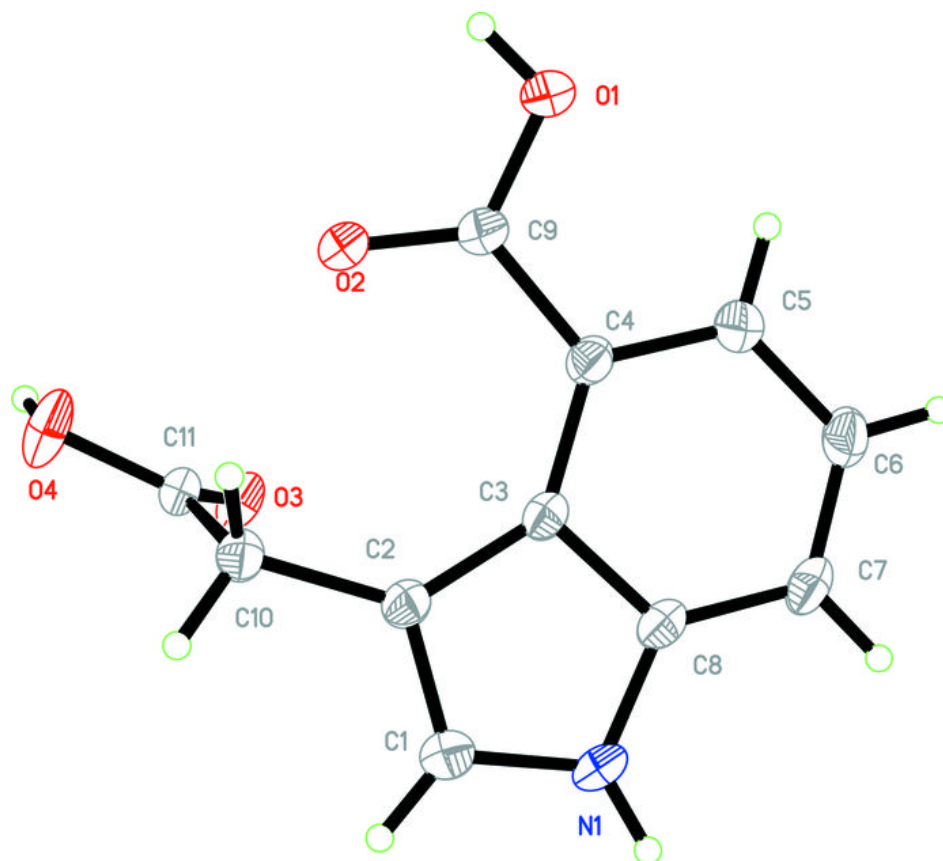


Fig. 2

